

NEW

A8 EVO



• 2 x 5.511.1105
PPL brush Ø 330 mm - 13"



• 4.508.1524
Front squeegee blade L.860 mm
Shore 33 Th. 4 mm

• 4.508.1523
Rear squeegee blade L.900 mm
Shore 40 Th. 4 mm



• 0.108.0059
On-board Battery charger
CBHD1-XR 24V 12A



- Designed for the maintenance and deep cleaning of large areas (up to 1.700 m²)
- Especially suitable for cleaning: car shops, sales points, gym, health care
- User friendly control panel • Hour Meter • Automatic brush lifting • Fully accessible recovery water tank • Automatic detergent measuring system • Big size traction wheels • Handle with control lever

	A8 Evo 66TA
code	8.525.1303
power supply	24V
scrubbing / squeegee width	660 / 900 mm
max working capacity	2640 m ² /h
detergent tank capacity	55 l / 14.5 gal
recovery tank capacity	55-65 l / 14.52-17.17 gal
traction	automatic
RPM / pressure on the brushes	175/33 kg /72 lbs
brush motor power	2 x 400 W
detergent solution system	solenoid valve
depression / vacuum motor	1200 mmH ₂ O/400 W
dimensions / weight	128x71x106 cm / 110 kg

Floor scrubber driers



User friendly digital control panel. Control lever for brush operation and detergent water outflow. ON/OFF and battery cutout key switch, brush and vacuum motor switch, detergent regulation device. Thermal circuit breaker to protect vacuum motor and brush motor, battery charge level indicator. Hour meter, clean water tank

level indicator. Detergent regulation device. Recovery tank drain hose with adjustable flow system. Automatic brush lifting.



Automatic detergent dosing system. Fully accessible recovery water tank with visual inspection. Easy access and simple service of the components without use of tools.

Battery trolley for a quick and easy battery change. Big size wheels for better maneuverability and effortless use.



- 2 x 0.107.0002
Tubular battery Pb-acid
12V 118Ah C5



- 2 x 0.107.0063
GEL Battery 12 MFP 105
12V 105Ah C5



- 0.108.0001
Battery Charger 24V 12A
220-240/50-60



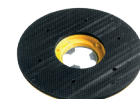
- 4.508.1526 Polyurethane
front blade L.860 TH. 4
- 4.508.1525 Polyurethane
rear blade L.900 TH. 4



- 5.511.1106
Tynex brush Ø 330 mm-13" 2x

- 5.511.1255
PPL 0,03 brush Ø 330 mm-13" 2x

- 5.511.1202
PES brush Ø 330 mm-13" 2x



- 5.511.1107
EWU pad driver Ø 330mm-13" 2x



- 6.508.0030 - Ø 340 mm-13"- beige
- 6.508.0037 - Ø 340 mm-13"- green
- 6.508.0044 - Ø 340 mm-13"- black